



VIDEO-OUT CARD



VIDEO-OUT CARD
User's Manual
ver. 2.0

Content

Inside Package	P.0
System Requirements & Installation Description.....	P.0
Installation Procedure	P.1-P.9
How to using the Video-Out Card with PDA.....	P.10

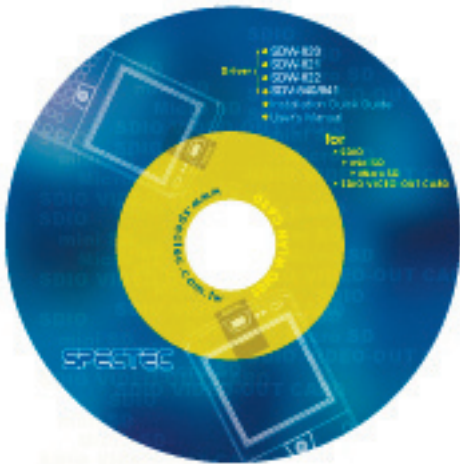


Thank you for choosing SPECTEC SDIO VIDEO-OUT Card, the fantastic product you can get in the market place. It's easy to carry and use. Just start to enjoy the most convenient wireless experience.

■ Inside Package

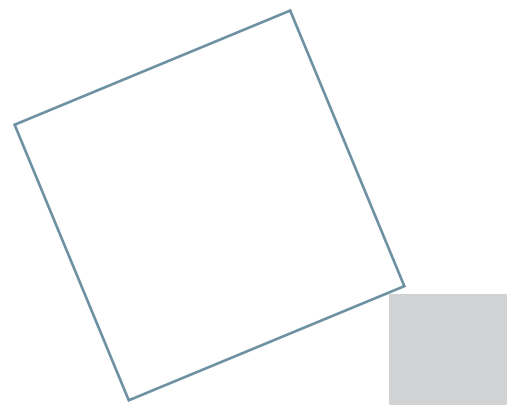


Driver & User Guide CD



■ System Requirements & Installation Description

1. This SPECTEC SDIO VIDEO-OUT card can only be used with Windows Mobile 2002 or newer versions of this operation system.
2. This SPECTEC SDIO VIDEO-OUT card can only be used on PDAs with the SDIO drive.





■ Installation Procedure

< First, connect PDA to your computer with a USB wire.



< Main menu window will pop-up when you insert the Spectec SDIO Series Installation CD by autorun:

<Click the "SDV-840/ SDV-841" item, then click "Slide Projector" item again.





■ How to add a new printer for make JPEG file



<Click the JPEG Transfer Method item
(*Note : To install Acrobat software for browse specs)

■ Install driver for PPC2002 / 2003 OS

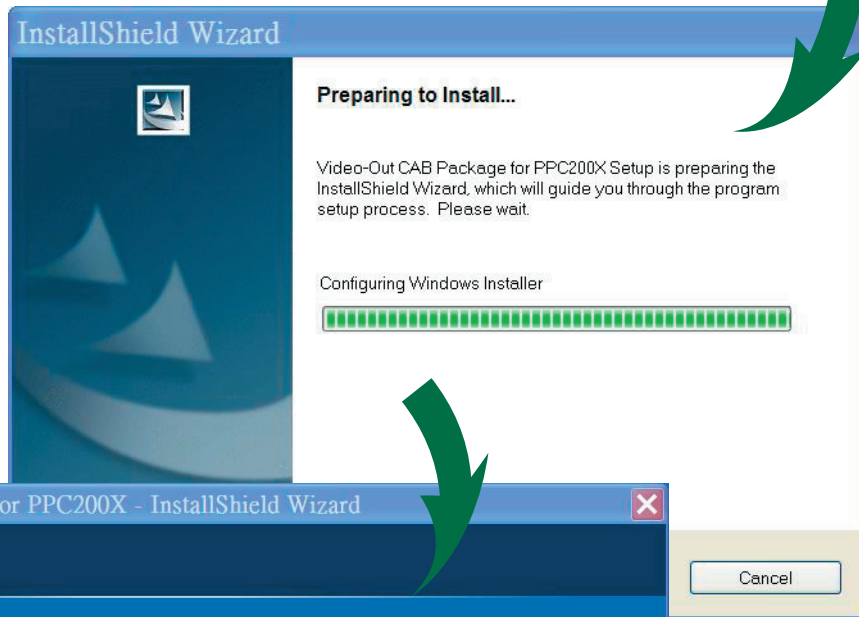
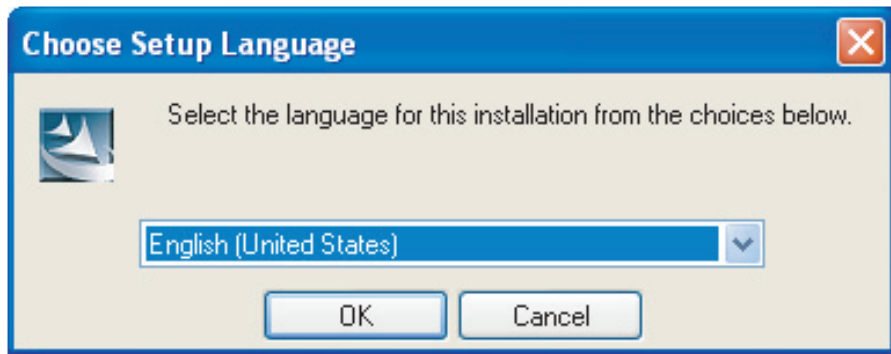


<Click "Pocket PC 2002 / 2003"

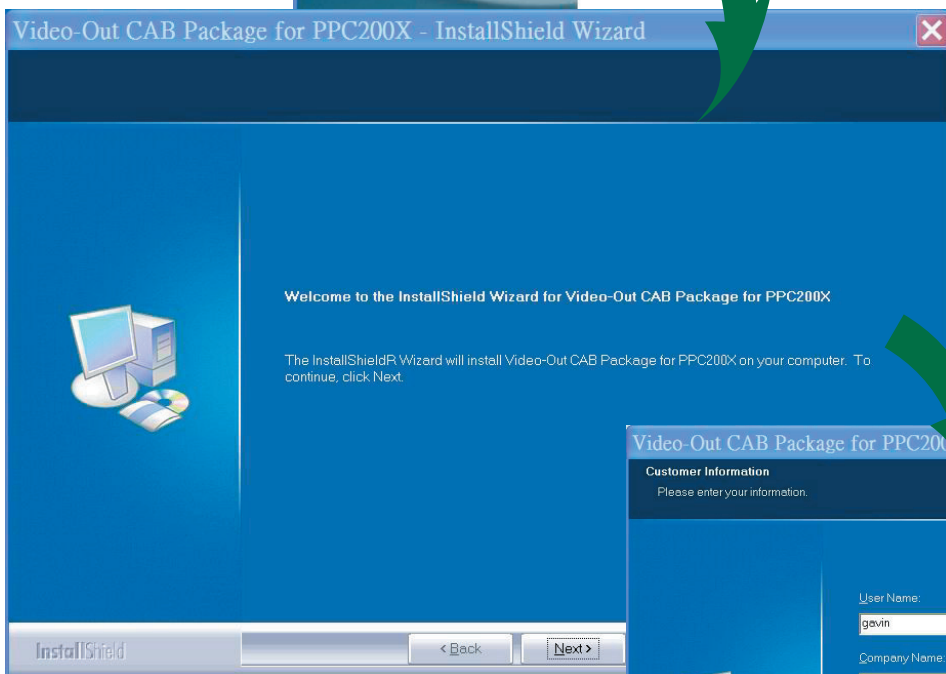




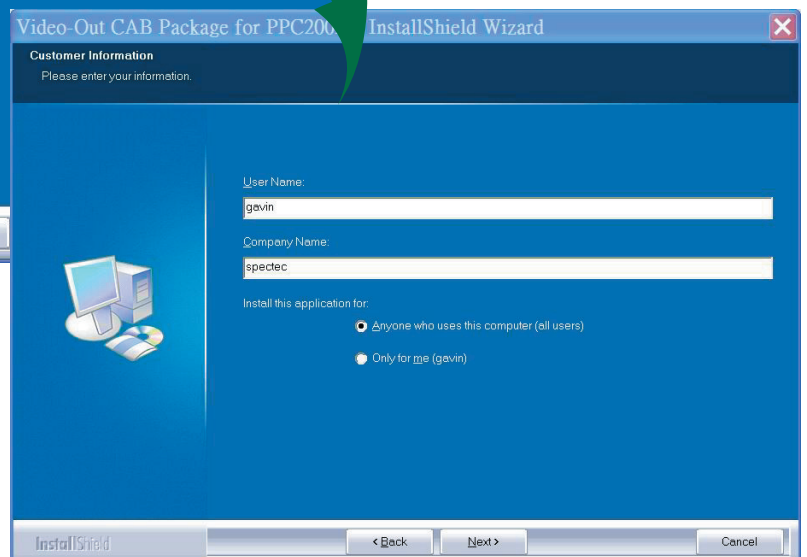
<Choose the desired Language, then click **OK**



<Click **Next**

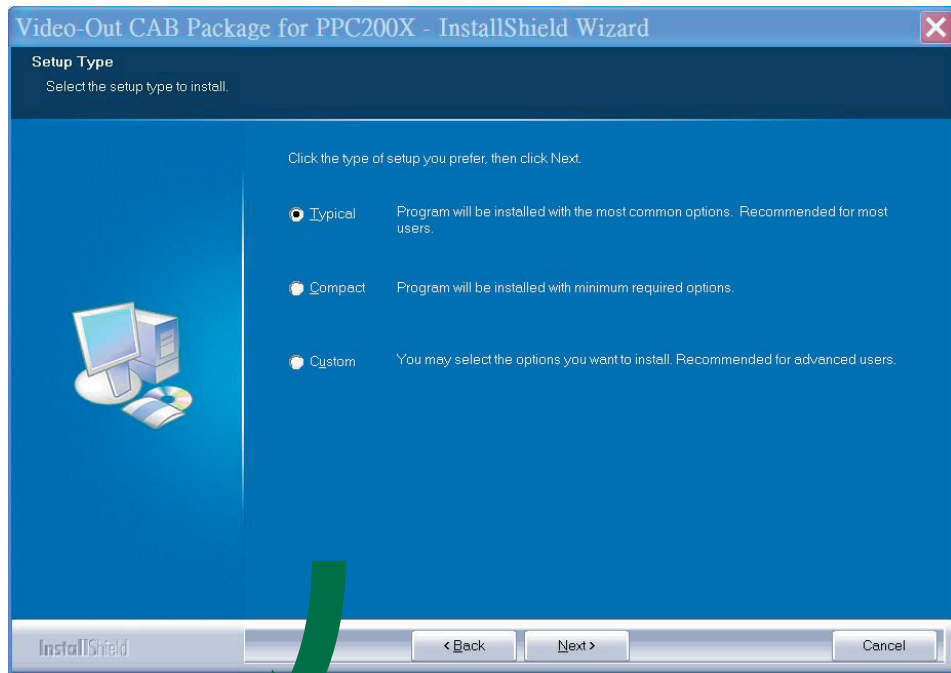


<Enter user information then click **Next**

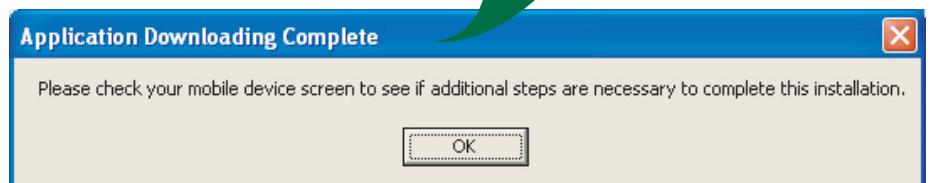
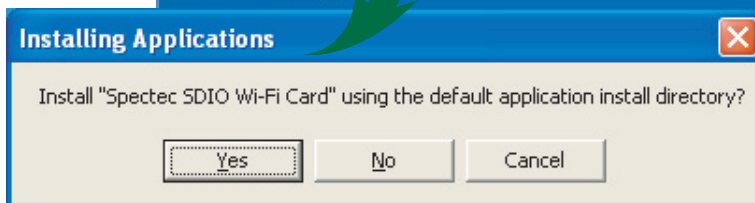
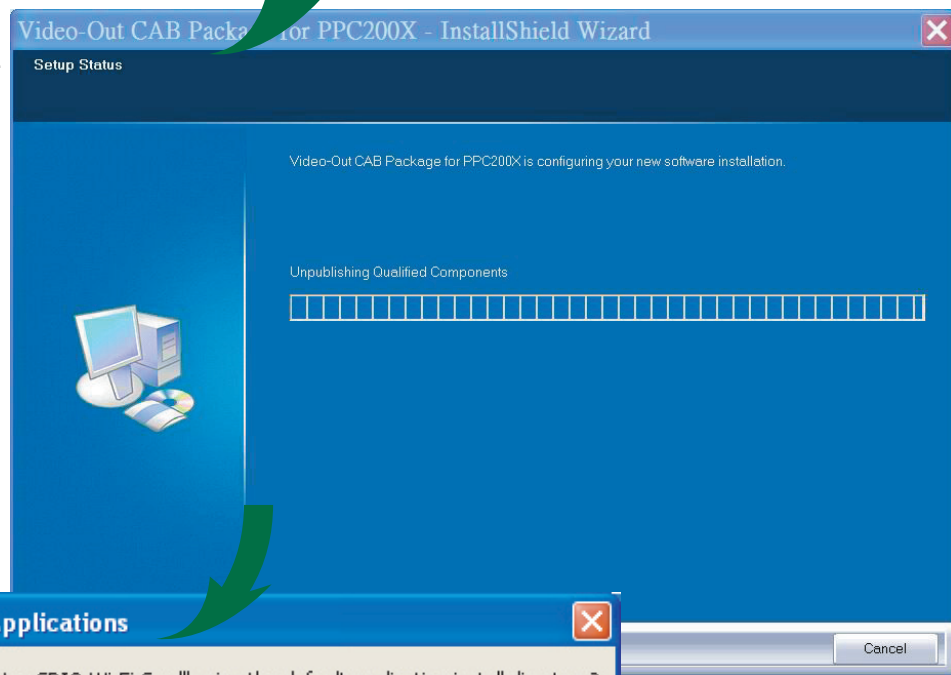




<Choose Setup type, then click **Next**

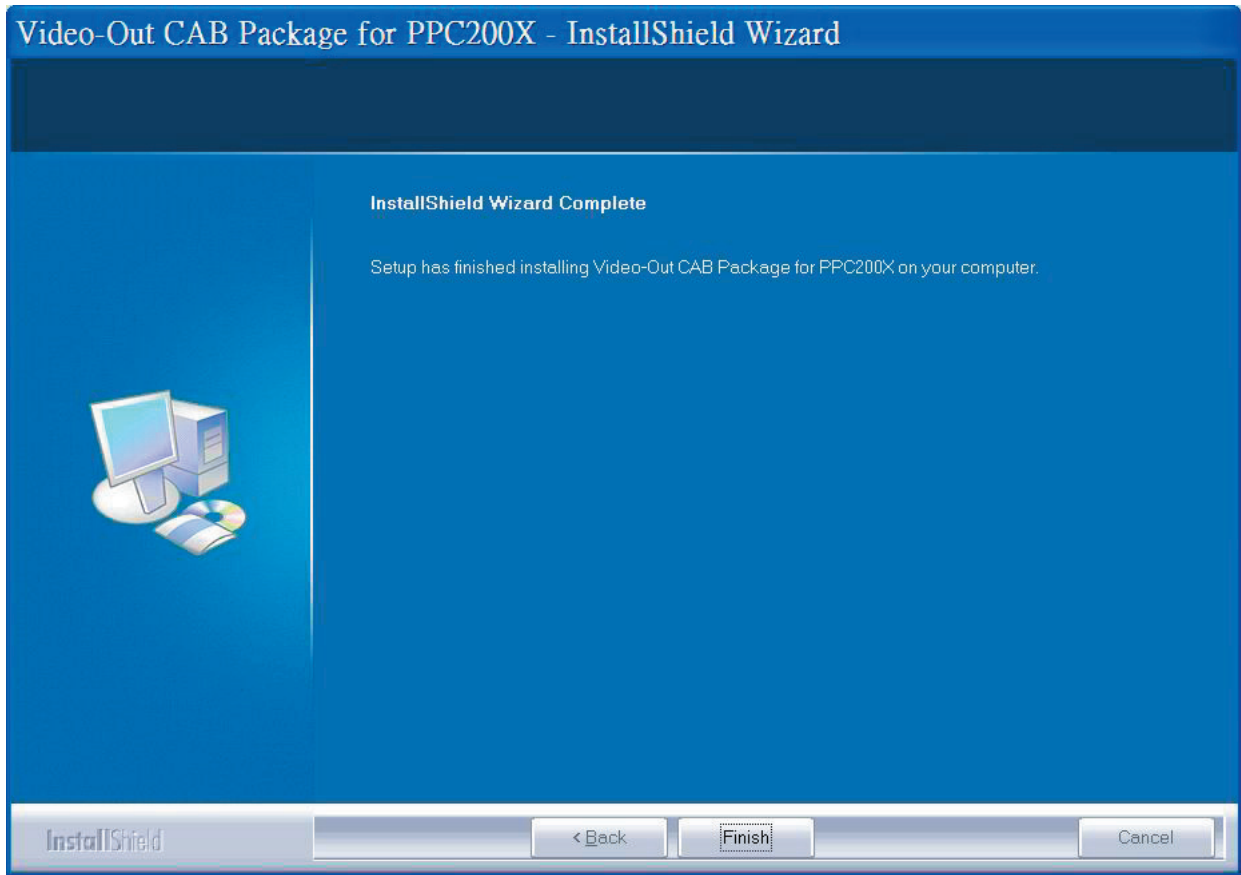


<The driver package will be installed automatically.



<Click Yes to proceed with installation. Click **OK** to finish installation.





<Click Finish to complete the driver package installation process.

(*Note : Pls. reset the device to complete install Process)



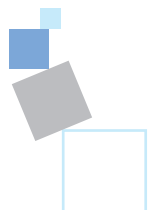
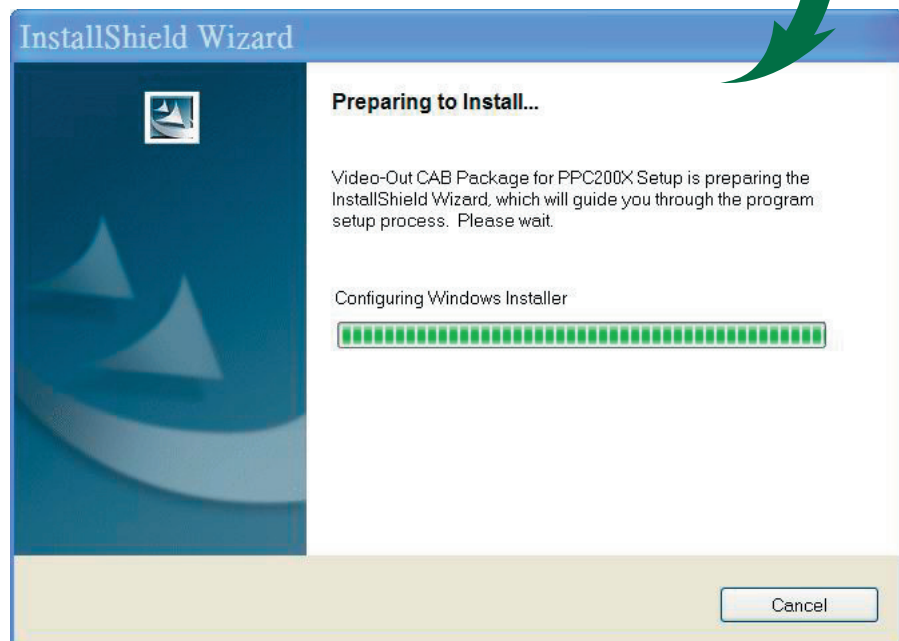
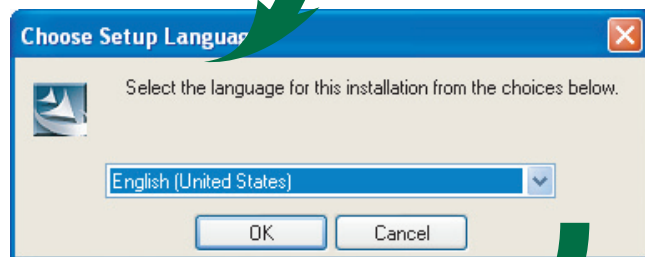


■ Install driver for WM5.0 OS

<Click **Window Mobile 5.0** item

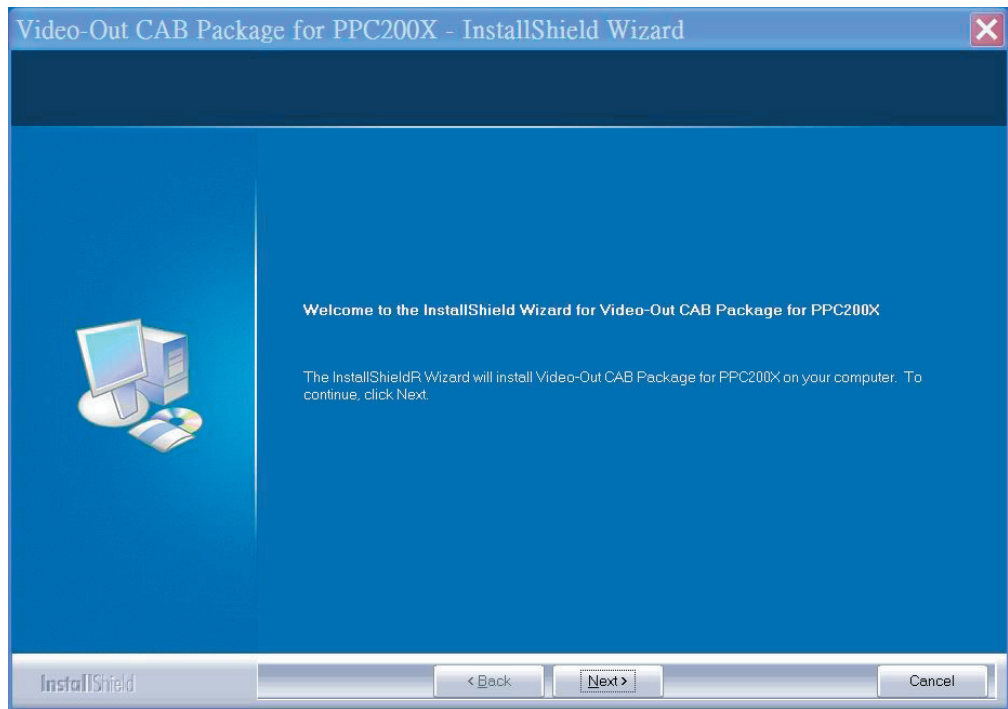


<Choose the desired Language, then click **OK**

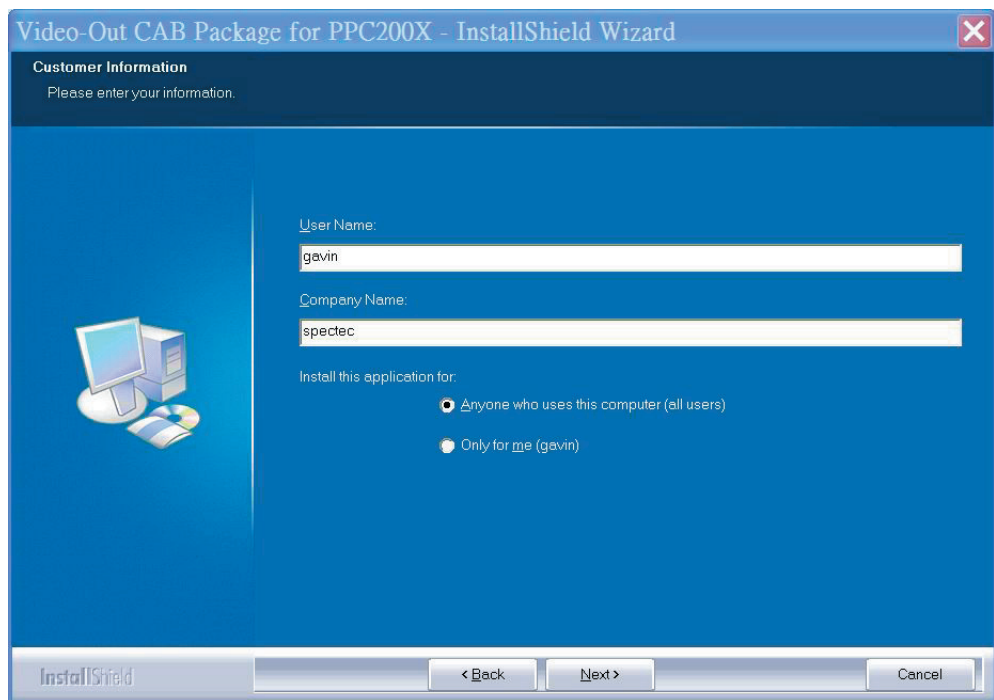




<Click **Next**

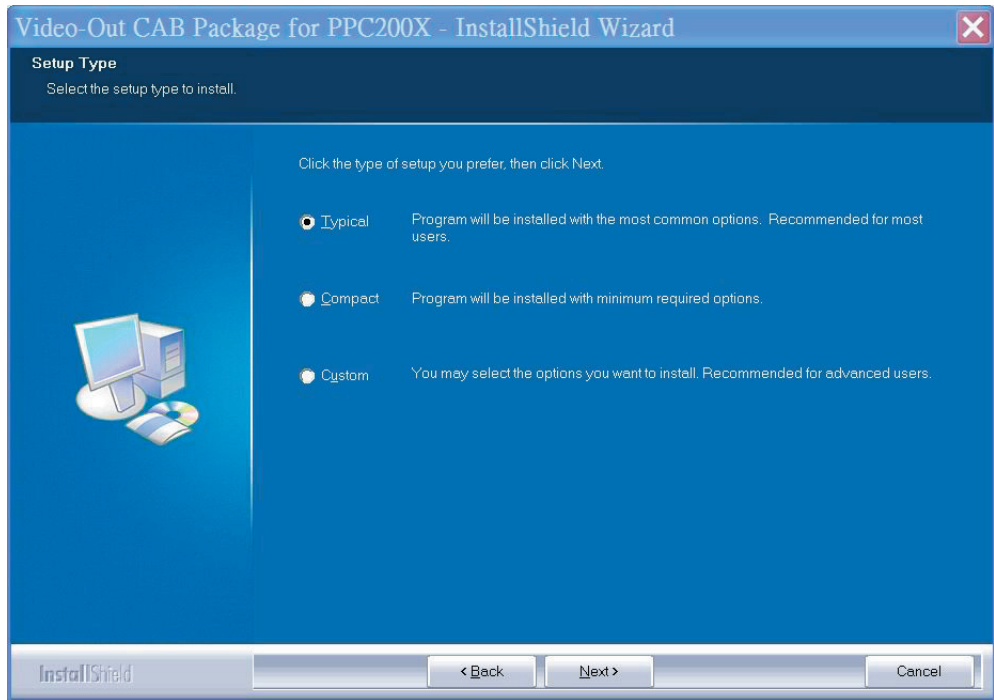


<Enter user information then click **Next**

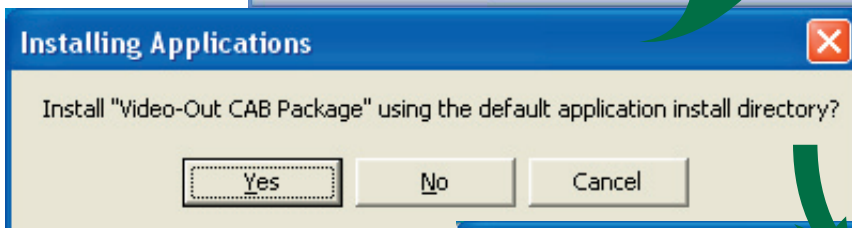
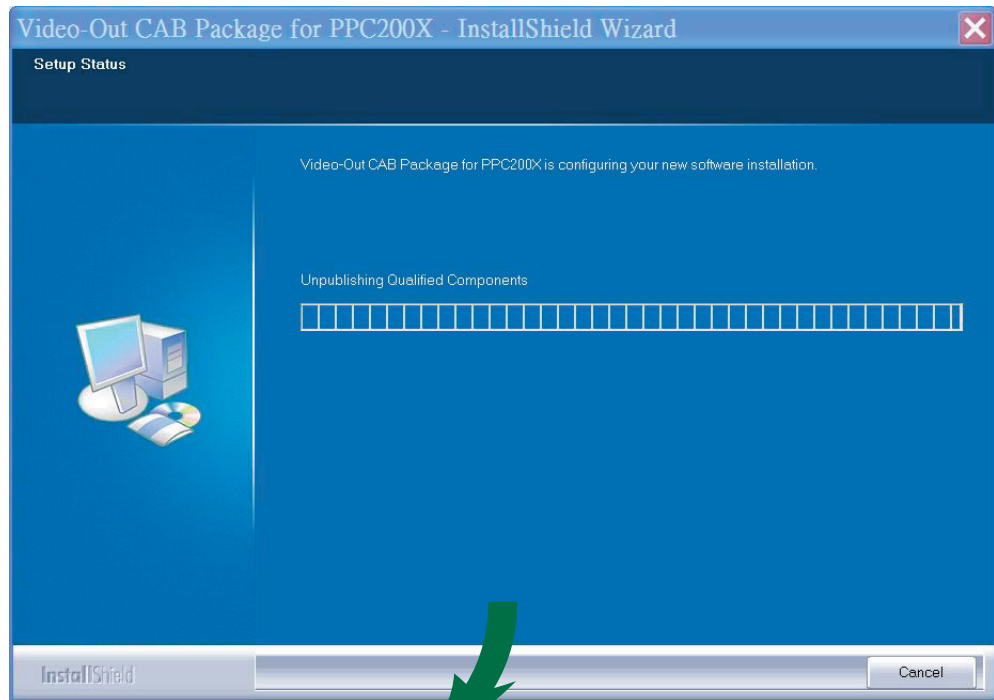




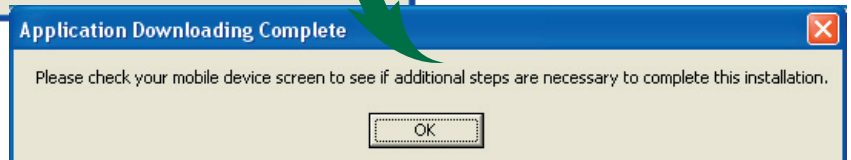
<Choose Setup type, then click **Next**

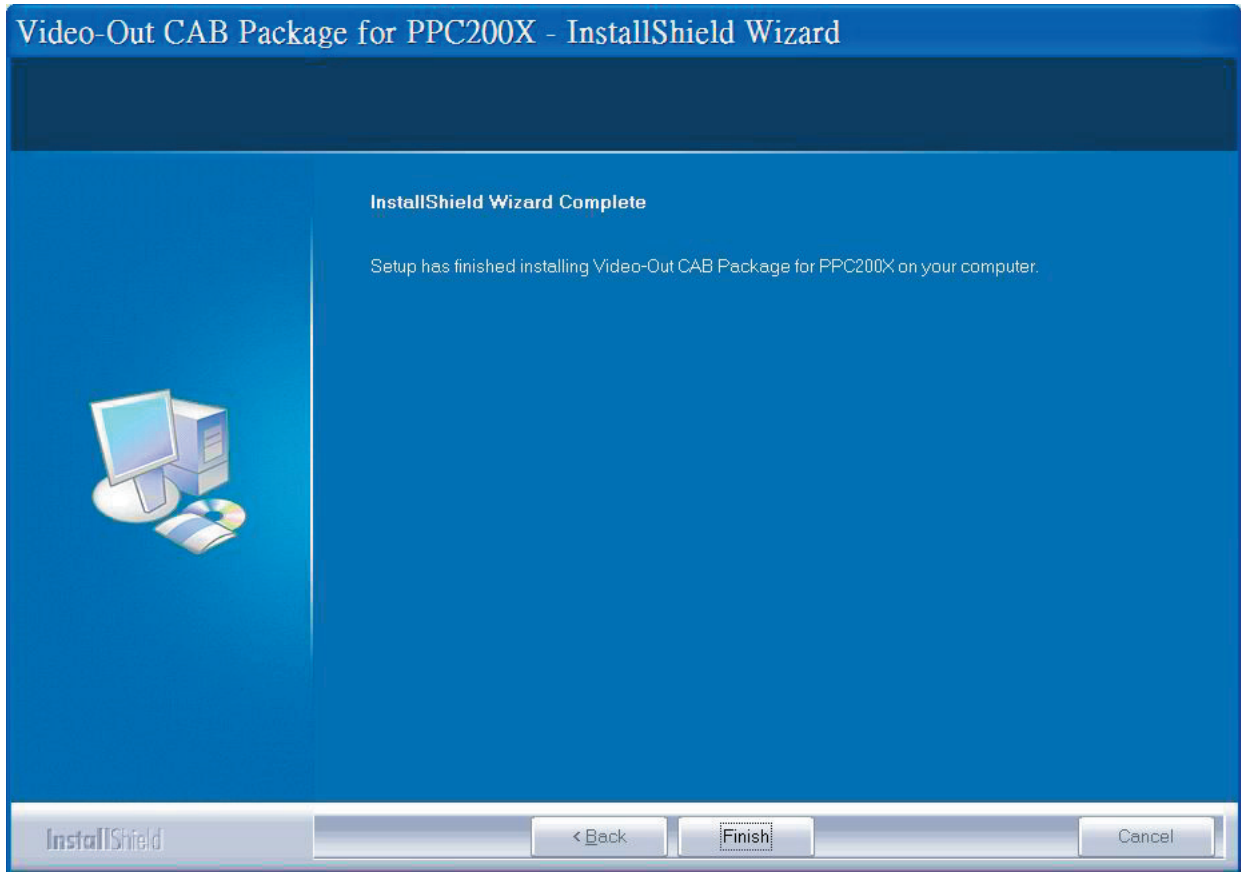


<The driver package will be installed automatically.



<Click **Yes** to proceed with installation. Click **OK** to finish installation.

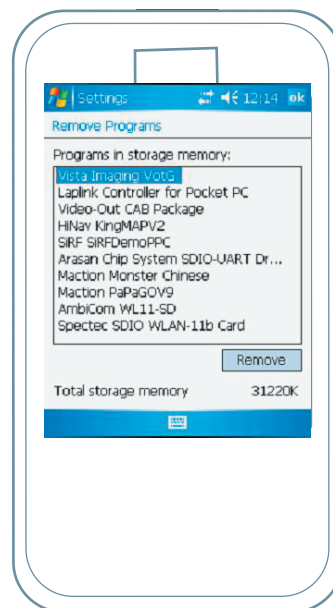




<Click **Finish** to complete the driver package installation process.



<Click "Video-Out CAB Package" to install Video-Out driver from PDA
PATH:Start/Programs.



<Checking the install driver "Spectec VotG" from PDA
PATH : Start/ Settings/ System/
Remove Programs.

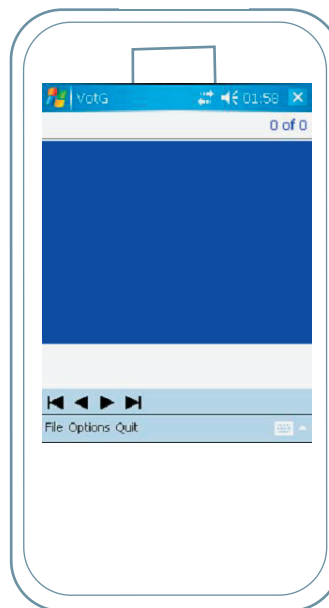


■ How to using the Video-Out Card with PDA

1. Use ActiveSync software and Copy the JPEG file to PDA :My Documents (Please note the file only can be detected when you save your file in \My Documents) .



2. Insert the SPECTEC SDIO Video-Out card into the PDA. The program will be started automatically, and select the image file that would be played.



3. Select the appropriate way of composite Video Output, S-Video Output, or VGA Monitor Output Port, and connect.





Specifications

Interface: SDIO 1 bit, 4 bit & SPI modes of operation via SD card interface cable

Resolution: Full-color (YUV 4:2:2) 640 x 480

Remote Control: 10-button Infrared with dual IR receivers

Composite Video Output: NTSC/PAL 1Vp-p video signal

S-Video Output: NTSC/PAL 1Vp-p component video signals

VGA Monitor Output Port:

< VGA 640 x 480 RGB at 60Hz interface for connection to standard monitor or projector

< Single +5 volt regulated power source

Source Presentation Format: Slides can be created from any printable Windows™ XP/2000 application

Handheld: Pocket PC handhelds & Smartphone with SD/mini SD slot supporting SDIO protocol

Display & Presentation Devices:

< Display Device with HD-15 (VGA) connector and support for 640 x 480 resolution at 60Hz (This includes most CRT monitors and projectors)

< Any NTSC or PAL composite or S-Video, video monitor

*All specifications are subject to change without prior not



Thank You for Purchasing Spectec's Products